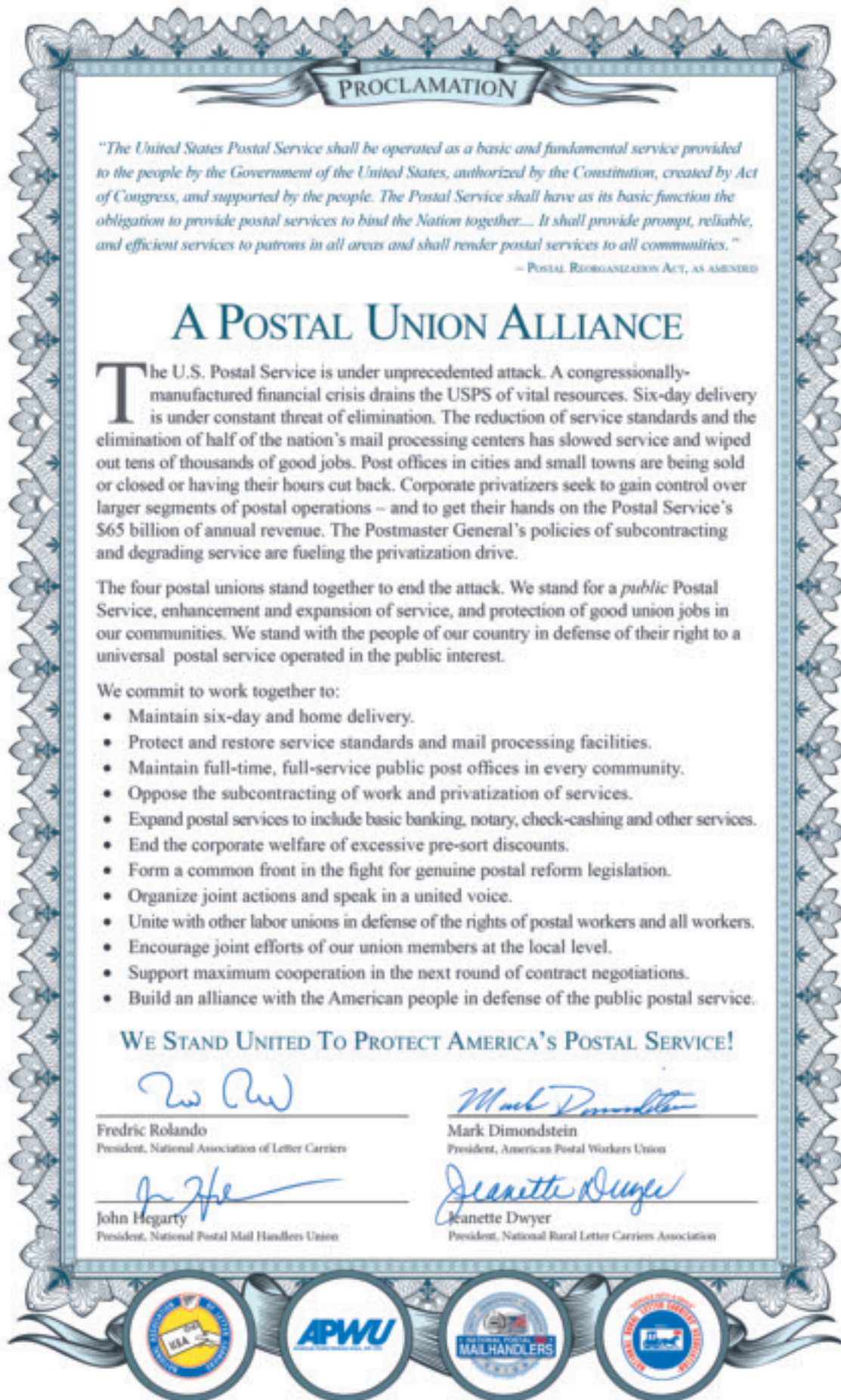


On March 10, 2014 a proclamation entitled; "A Postal Union Alliance" was signed by the Postal Union Presidents representing the Mail Handlers, American Postal Workers, City Letter Carriers and Rural letter Carriers. The purpose of the agreement is to show our solidarity, and to protect the invaluable institution that is the United States Postal Service. We call upon our members, and the American Public to join with us in this important endeavor.



National Postal Mail Handlers Union



2014 WALK TO

CURE DIABETES

The Juvenile Diabetes Research Foundation (JDRF) was founded by parents of children with type 1 diabetes (T1D) more than 40 years ago. For much of that time, JDRF has been the official charity sponsored by the National Postal Mail Handlers Union. Every year we sponsor, raise money and walk to support this cause for our children and their families who struggle with this disease. This year our walk, which is now organized as "The Greater Chesapeake and Potomac Chapter" will be held on **Sunday, June 1, 2014** on the **National Mall in Washington, DC**. Please consider making a donation to support the NPMHU team.

Visit www.npmhu.org for additional details.