

This article appeared in the February 2011 issue of *Mail Handler UPDATE*. The proposed change form – which is reproduced here for your convenience – was mailed with the February *UPDATE* to all Local Unions and all Local Union officers and stewards, and can be downloaded on the NPMHU website.

2011 NATIONAL NEGOTIATIONS

OFFICIAL CALL FOR BARGAINING PROPOSALS

With preparations underway for negotiations over the terms of the 2011 National Agreement between the NPMHU and the Postal Service, the National Office has issued its official call for bargaining proposals from all members and Local Unions.

To be fully considered prior to the onset of negotiations, proposals must be submitted by March 31, 2011. Although formal bargaining is not scheduled to begin until August or early September of this year, the Union's Field Negotiating Committee will be meeting for a full week in April 2011 to review all submitted proposals and outline the changes in the National Agreement that should be proposed by the NPMHU.

To be sure, planning for collective bargaining is a continuous process at the National Office, as the National Officers and representatives working in the Contract Administration Department routinely identify and collect proposals for improving the language currently found in the 2006 National Agreement. But an equally important aspect

of preparing for bargaining is the collection and review of proposals generated by mail handlers across the country. Thus, National President John Hegarty has issued this official call for bargaining proposals from the membership, the Local Unions, and other subordinate bodies of the NPMHU.

If you have any proposals that you would like to have considered for the upcoming round of bargaining, now is the time to submit them to the National Office. Every proposal submitted will be fully analyzed by the NPMHU's Field Negotiating Committee and the National Negotiations Team while the Union develops its opening bargaining proposals.

All proposals should set forth the Article, Section, Paragraph, and/or Page of the National Agreement that you are suggesting should be changed; the specific language you would like to see added to, or deleted from, the current National Agreement; and your specific reasons for suggesting the change. If you have supporting evidence or documentation that you believe

would support the change that you propose, please submit those materials to the National Office along with your proposals.

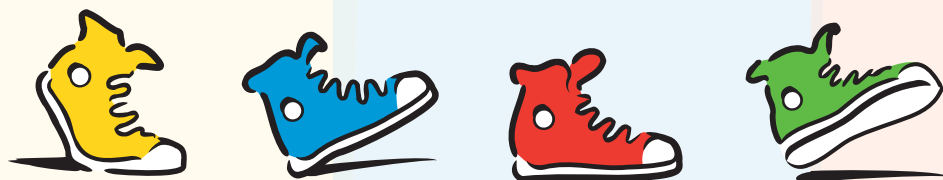
The National Office is asking that all proposals be submitted as soon as possible, but in no event later than March 31, 2011. The National Office also has issued a form that can be used to submit proposals. Copies of that form have been mailed to all Local Unions and all Local Union officers and stewards, and can be downloaded on the NPMHU website. And, a copy of that form is reproduced on the next page.

Once again, proposals from any member (or group of members) and any Local Unions or other subordinate body should be submitted to the National Office by March 31, 2011, using the following address:

National Postal Mail Handlers Union
2011 Contract Negotiations
1101 Connecticut Avenue, NW, Suite 500
Washington, DC 20036

JDRF is the official charity that the NPMHU sponsors each year.

One of the ways we support JDRF is through its Annual Walk to Cure Diabetes.



JUVENILE DIABETES RESEARCH FOUNDATION

WALK TO CURE DIABETES

tions multiple times or use a pump—each day, every day of their lives. And even with that intensive care, insulin is not a cure for diabetes, nor does it prevent its eventual and devastating complications, which may include kidney failure, blindness, heart disease, stroke, and amputation. Since its founding in 1970 by parents of children with type 1 diabetes, JDRF has awarded more than \$1.4 billion to diabetes research.

The Walk to Cure Diabetes is an annual event that draws people together in a healthy activity for a worthy cause, raising money to help find a cure for diabetes. If you would like to make a contribution, please make a check payable to JDRF and mail it to Martha Ring at NPMHU Headquarters.

JDRF sets the global agenda for diabetes research, and is the largest charitable funder and advocate of diabetes science worldwide. The mission of JDRF is to find a cure for diabetes and its complications through the support of research. Type 1 diabetes is an autoimmune disease that strikes children and adults suddenly, and can be fatal. Until a cure is found, people with type 1 diabetes have to test their blood sugar and give themselves insulin injections